



**REGIONAL SPECIALISED METEOROLOGICAL CENTRE-TROPICAL CYCLONES, NEW DELHI  
TROPICAL WEATHER OUTLOOK**

---

**DEMS-RSMC TROPICAL CYCLONES NEW DELHI DATED 23.09.2020**

**TROPICAL WEATHER OUTLOOK FOR NORTH INDIAN OCEAN (THE BAY OF BENGAL AND ARABIAN SEA) VALID FOR NEXT 120 HOURS ISSUED AT 0600 UTC OF 23.09.2020 BASED ON 0300 UTC OF 23.09.2020 .**

**BAY OF BENGAL:**

SCATTERED TO BROKEN LOW AND MEDIUM CLOUDS WITH EMBEDDED INTENSE TO VERY INTENSE CONVECTION LAY OVER NORTH AND EAST-CENTRAL BAY OF BENGAL AND WEST-CENTRAL BAY OF BENGAL OFF NORTH COASTAL ANDHRA PRADESH. SCATTERED LOW AND MEDIUM CLOUDS WITH EMBEDDED MODERATE TO INTENSE CONVECTION LAY OVER SOUTH BAY OF BENGAL AND ANDAMAN SEA.

**PROBABILITY OF CYCLOGENESIS DURING NEXT 120 HRS:**

| 24 HOURS | 24-48 HOURS | 48-72 HOURS | 72-96 HOURS | 96-120 HOURS |
|----------|-------------|-------------|-------------|--------------|
| NIL      | NIL         | NIL         | NIL         | NIL          |

**ARABIAN SEA:**

SCATTERED TO BROKEN LOW AND MEDIUM CLOUDS WITH EMBEDDED INTENSE TO VERY INTENSE CONVECTION LAY OVER NORTH-EAST ADJOINING EAST-CENTRAL ARABIAN SEA AND SOUTH-EAST ARABIAN SEA. SCATTERED LOW AND MEDIUM CLOUDS WITH EMBEDDED MODERATE TO INTENSE CONVECTION LAY OVER GULF OF KUTCH AND GULF OF CAMBAY. SCATTERED LOW AND MEDIUM CLOUDS WITH EMBEDDED WEAK TO MODERATE CONVECTION LAY OVER REST OF ARABIAN SEA.

**PROBABILITY OF CYCLOGENESIS DURING NEXT 120 HRS :**

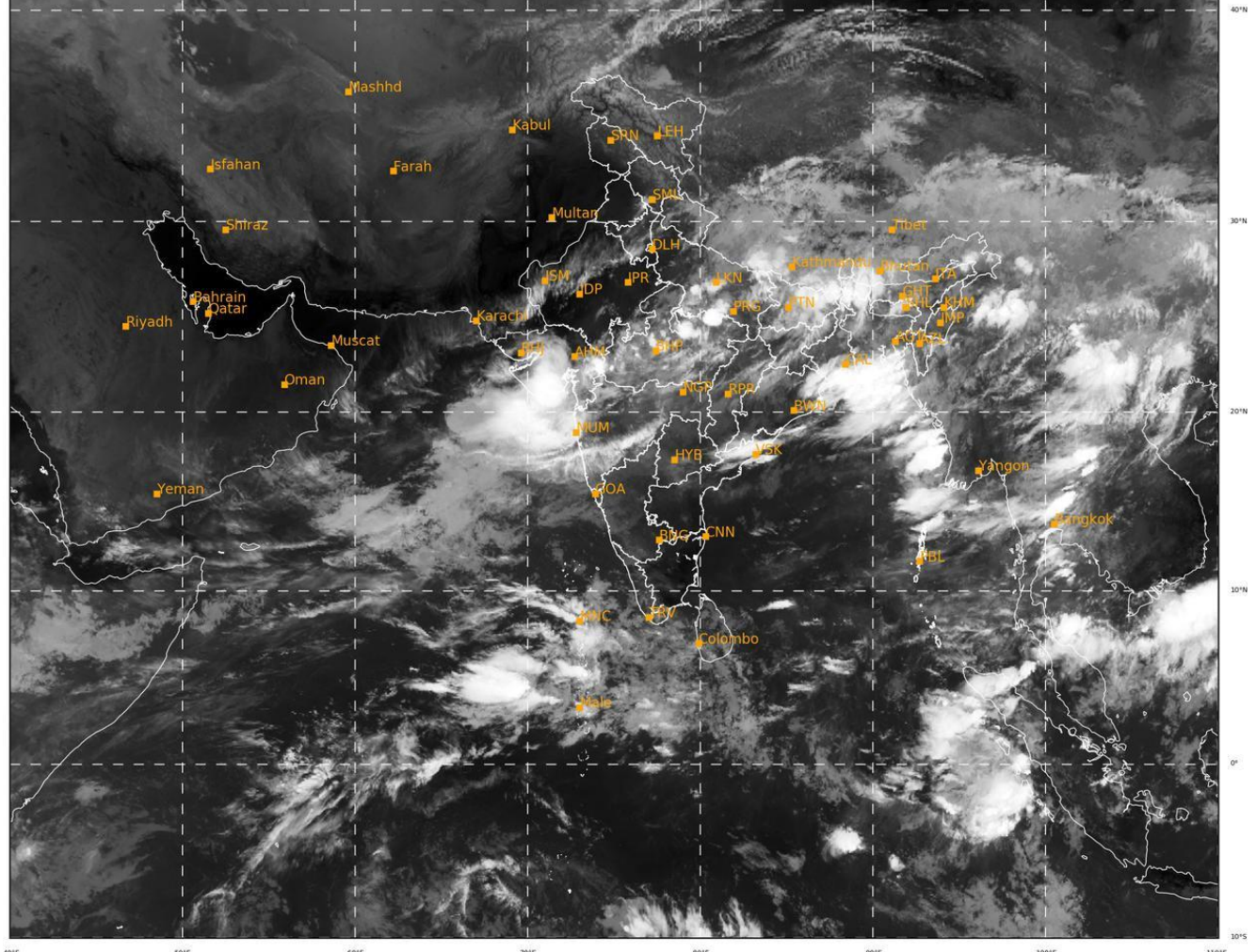
| 24 HOURS | 24-48 HOURS | 48-72 HOURS | 72-96 HOURS | 96-120 HOURS |
|----------|-------------|-------------|-------------|--------------|
| NIL      | NIL         | NIL         | NIL         | NIL          |

**REMARKS:**

Nil



# NO CYCLOGENESIS OVER NORTH INDIAN OCEAN DURING NEXT 24 HOURS



489

937

IMD, DELHI

PROBABILITY OF CYCLOGENESIS (FORMATION OF DEPRESSION):NIL: 0%, LOW: 1-25%, FAIR: 26-50%, MODERATE: 51-75% AND HIGH: 76-100%

✚ This is a guidance Bulletin for the WMO/ESCAP Panel Member countries,. Please visit respective National websites for Country specific Bulletins